

PT50A Vet

Touch B/W Portable Ultrasound Scanner System

PT50A Vet, fully-featured touch veterinary ultrasound system with special designed veterinary transducer and veterinary software, comes equipped with a best-in-class combination of performance and affordability. Simple touch to save time, this simple operation helps enhance exam productivity also minimize most of users learning curve. In additional, PT50A Vet is the most lightweight hand-carried ultrasound with three probe ports, made of robust housing case, this is designed to withstand today's harsh environments to complete the highest quality examination.

ANIMAL CLINICAL APPLICATION



SMALL ANIMALS



EQUINE



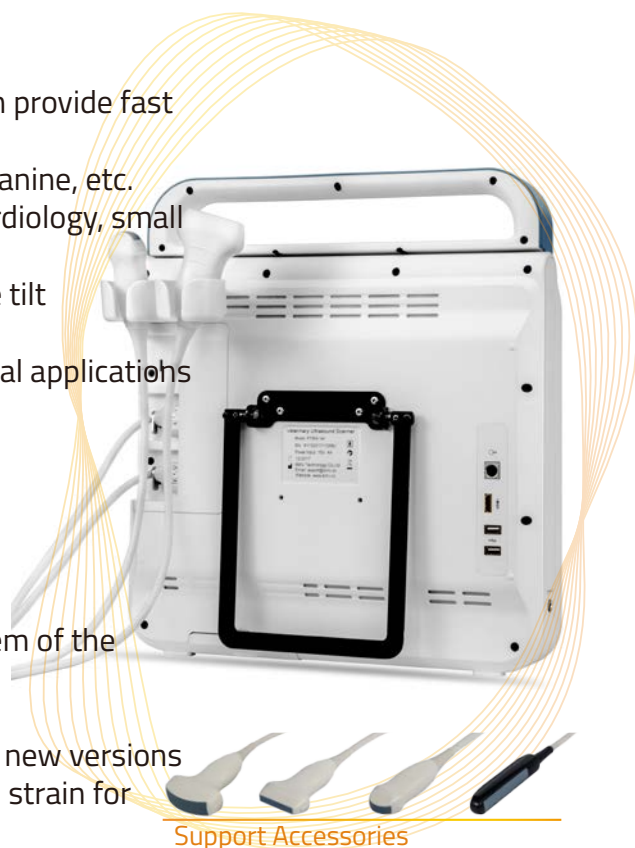
EXOTIC SPECIES



ADVANTAGES AT A GLANCE

PT50A Vet

- Specialized veterinary transducer and veterinary software
- Advanced imaging technology and superior image quality can provide fast and precise scans
- Applicable to scans of Equine, Bovine, Ovine, Swine, Feline, Canine, etc.
- Applicable to different diagnosis of Abdomen, Obstetrics, Cardiology, small parts, vascular, tendon, etc
- 15 inch high resolution, wide-angle color LCD with 45 degree tilt functionality
- Three transducer port is designed to meet the different clinical applications
- Replaceable long life battery
- iBscan™ Quick Image Optimization
- Annotation library for quick comment
- iBstation™ Patient information management system
- USB image transfer and software upgrade
- Image clipboard for thumbnail view
- The supported DICOM 3.0 can communicate with PACS system of the hospital seamlessly
- Special-designed probe holder, no need for extra assistance
- Modular software, easy for upgrade, free lifetime upgrade to new versions
- Support rectal probe introducer, eases your shoulder and arm strain for Fetal Aging, Pregnancy Testing



PT50A Vet Specification

Imaging Modes:	B, M, 2B, B/M, 4B
Application scenarios:	Veterinary clinic & research departments and livestock farm, Zoo, etc. Application for equine, large animal, small animal, zoo mammal, and marine mammal medicine
Ultrasound platform:	Based on Linux, stable performance, security data
Touch Screen:	Fully resistive touch screen
Transducer connector:	3 active, unique micro connector
Battery Working time:	Continuous scan greater than 5 hours with 2 batteries, replaceable battery design
Technology Descriptions:	Wide-angle imaging, Panoramic focusing technology, Rolling M technology, Cloud processing technology, Noise suppression, Image enhancement
Simplified Workflow:	Zoom, iBscan™, DICOM3.0
Ergonomics:	15" high resolution LCD Monitor; Adjustable LCD view angle; Convenient cable & probe hook
Size& Net weight:	Height: 402 mm Width: 385mm Depth: 53mm, approx. 4.5kg
Connection Port:	WIFI, 2*USB, S-Video, HDMI
Optional:	Trolley Cart, Transducer, Wheeled Transport case, DICOM 3.0, Video printer, Optional Warranty

www.bmv.cc



Specification subject to change without prior notice
©2008-2016 BMV Technology Co., Ltd. All Rights Reserved

BMV Technology Co., Ltd

Address: 4/F, BMV of Yinjin Building, Block 71,
Baoan Centre District, Shenzhen, China
Tel: + 86-755-26564580; Email: export@bmv.cc

