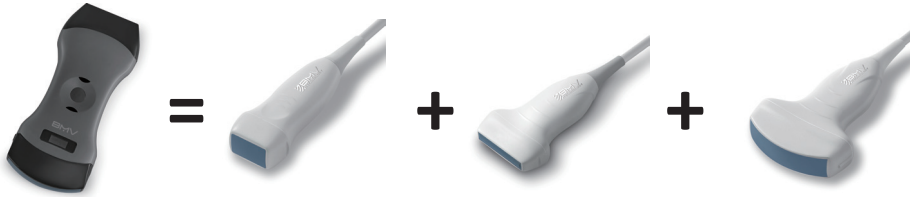


MX3

Three/Two transducers. One probe.



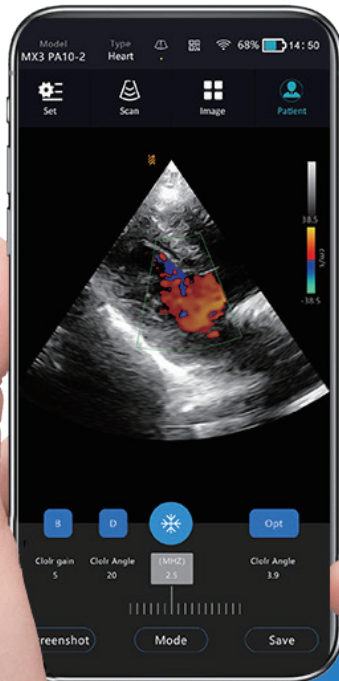
MX3 Multiprobe Series scanners are pocket-sized ultrasound with three/two transducers in one probe, speed diagnostic decisions for a wide range of clinical applications.



FDA Approved



CE Certificated



Cardiac ultrasound probe in your pocket

With only about 260g (0.6lbs), it contains everything you need to image a full human body, especially for cardiac imaging. Put it in your pocket and bring it to the bedside of every patient. Designed for more remote and efficient diagnosis.

Three transducers imaging power

Complete shallow, deep and cardiac scans without switching probes or compromising on image quality.

Insight right in your pocket

Supports early diagnosis and helps you quickly decide on next steps.

Comprehensive Clinical Solution

Cardiology, Emergency Medicine, Primary Care/ Internal Medicine, Urology, Women's Health, Vascular, Critical Care, Medical School Education



PA10-2E

Phased+Linear+Convex 1 transducer.

Frequency: Convex+Phased 3.5MHz/5MHz
Linear 7.5MHz/10MHz
Max Depth: 305mm/100mm

Applications:

bedside cardiac, ABD vascular access.
Breast, MSK, Nerve, Ocular,
Small Parts, Anesthesia



C2L7

Linear+Convex 1 transducer.

Frequency: Convex 3.5MHz/5MHz
Linear 7.5MHz/10MHz
Max Depth: 305mm/100mm

Applications:

Ideal for:
Abdominal, Lung, Superficial, Vascular



EC7C2

Endocavity-Convex transducer.

Frequency: Endocavity-6.5MHz/8.5MHz
Convex 3.5MHz/5MHz
Max Depth: 100mm/305mm

Applications:

Abdominal, OB/GYN, Superficial, Vascular



EC7L7

Endocavity-Linear transducer.

Frequency: Endocavity-6.5MHz/8.5MHz
Linear 7.5MHz/10MHz
Max Depth: 100mm/100mm

Applications:

Vascular, Lung. Breast, MSK, Nerve, Ocular,
Small Parts / Animals, Anesthesia



BMV Medical Group Co., Ltd

Manufacturer of specialty medical devices across
medical and veterinary fields since 2008.

MX3

High-frequency point-of-care ultrasound machine for healthcare pros.



FDA Approved



CE Certificated



POINT-OF-CARE IMAGING IN YOUR POCKET.

With only about 230g (0.5lbs), this MX3 scanner enables clinicians to easily image patients at the point of care. Put it in your pocket and bring it to the bedside of every patient.

SEE MORE. TREAT FASTER.

A wireless, lightweight handheld ultrasound system that enables the flexible Performance of whole body scanning and delivers crystal-clear images. MX3 is easy to use, intuitive to navigate and optimized for your mobile device.



UP TO 10MHZ PROBE ULTRASOUND

MX3 linear probe ultrasound provides 2 levels of high frequency: 7.5MHz and 10MHz, perfect for vascular access, breast, thyroid and carotid. Especially for MSK application, 73% of our customers are podiatrists or foot & ankle specialists, and have utilized our probe in sports center and foot clinics.

2.5X FASTER

2-hour flash recharge for every your emergent shift.
With only 260g (0.6lbs), we're way more portable than others.
No cloud storage. Save data on your own device.
No extra fees for any service, one-time purchase for all you need.



C2 L7 HD:192 elements Linear/Convex
C2 L7:128 elements Linear/Convex
Frequency:3.5-10MHz
Designed for abdominal scanning and MSK, Nerve, Ocular,Small Parts



C2E L7E B/W systems
Frequency:3.5-10MHz
Designed for abdominal scanning and MSK, Nerve, Ocular,Small Parts



BMV Medical Group Co., Ltd

Manufacturer of specialty medical devices across medical and veterinary fields since 2008.